

Stylish on the Outside. Smart on the Inside.



THE F&P ICON™ PREMO DELIVERS:

- ThermoSmart™ Technology for more humidity and comfort
- InfoSmart™ Technologies for flexible data communication options

PLUS

- Contemporary and stylish design for bedroom appeal
- Forward facing clock with customizable AlarmTunes™
- Compact footprint including humidifier and power supply
- Combined smart technologies.



 ThermoSmart™  InfoSmart™

Stylish on the Outside. Smart on the Inside.

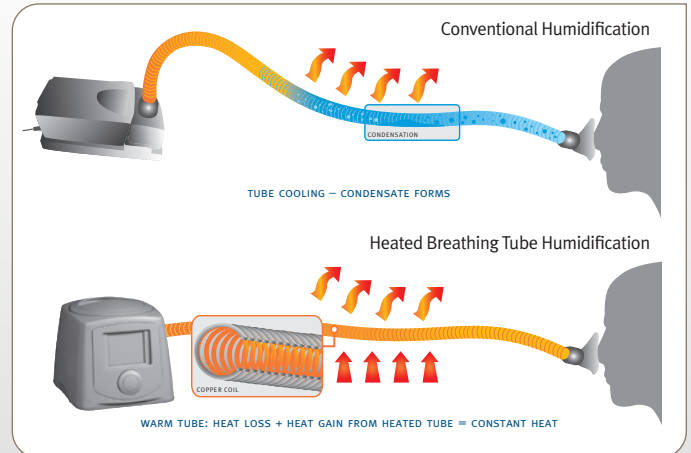
The F&P ICON™ has been designed from the outside-in to answer the strong call for a contemporary, compact CPAP that blends seamlessly into any bedroom environment, helping to break down some of the traditional resistance associated with CPAP therapy. Inside the F&P ICON™ is a comprehensive set of intelligent technologies, integrated into one stylish solution to deliver new levels of therapy, while effectively meeting your business needs.

ThermoSmart™

More humidity. More comfort.



ThermoSmart™ Technology includes an advanced humidification algorithm and a heated breathing tube, which both work to provide optimal humidity and reduce condensation. Patients will benefit from higher levels of humidity¹ for improved comfort^{2,3} and a clinically proven better night's sleep.³



InfoSmart™ Technologies

More communication. More results.



Retrieving compliance data in a timely and efficient manner is crucial to improving patient outcomes and achieving business success. The F&P ICON™ provides a range of solutions to suit varied business needs.

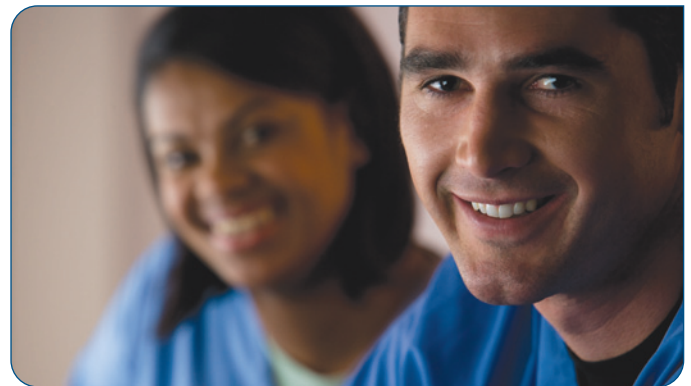
Data Communication

- InfoSend™ View: The patient can relay sleep data from the display screen of the device over the telephone, which can then be verified using the F&P InfoSmart™ software
- SmartStick™ (Net): The functionality of the SmartStick™ and SmartStick™ Net have been combined into one, so the choice of data retrieval becomes even more simple and cost effective. The physical SmartStick™ can be sent via the mail for data download, or the sleep data can be sent electronically via the web.

Data Reporting

The SmartStick™ utilizes USB technology, which provides large data storage capacity. The F&P InfoSmart™ software provides a range of options to report the data to meet your needs:

- 30 days detailed efficacy data (includes AHI, Pressure and Leak)
- 365 days of summary efficacy data
- Cumulative summary data from first use.



FOCUS ON FEATURES



Elbow

Used to connect a ThermoSmart™ or standard Breathing Tube to the device. The Elbow also rotates for a preferred position.

Water Chamber

One-piece chamber. Holds 420 ml of water and is dishwasher safe.



Chamber Lid

Must be correctly fitted for optimal pressure delivery and can also be used as a handle to carry the device.

Menu System

The Home Screen with a clock is the default display. Each point of the clock-face represents the available settings.



SmartStick™ / USB Port

The USB Port houses the SmartStick™ to record patient compliance, efficacy and flow data.

SmartDial™

Intuitive controls allow one-touch navigation of the Menu System, using a Press, Turn, Press principle.



Air Filter

Ensures the air is filtered from particles and dust.



PREMO CPAP | FEATURES

THE F&P ICON™ PREMO

INCLUDED WITH THE F&P ICON™	REPLACEMENT PARTS	PRODUCT SPECIFICATIONS																																															
<ul style="list-style-type: none"> Premo CPAP 1 x Carry-case* 1 x Water Chamber 1 x Chamber Lid 1 x Breathing Tube** 1 x SmartStick™ 1 x SmartStick™ Mailer 1 x Use and Care Manual 1 x spare Air Filter 	<table border="0"> <tr> <td>Water Chamber</td> <td>900ICON200</td> </tr> <tr> <td>SmartStick™</td> <td>900ICON202</td> </tr> <tr> <td>SmartStick™ Net</td> <td>900ICON203</td> </tr> <tr> <td>Elbow</td> <td>900ICON204</td> </tr> <tr> <td>Outlet Seal</td> <td>900ICON206</td> </tr> <tr> <td>ThermoSmart™ Breathing Tube</td> <td>900ICON208</td> </tr> <tr> <td>Breathing Tube</td> <td>900HC221</td> </tr> <tr> <td>Air Filter</td> <td>900ICON503</td> </tr> <tr> <td>Filter Grill</td> <td>900ICON218</td> </tr> <tr> <td>Silver Gloss Lid</td> <td>900ICON214</td> </tr> <tr> <td>Matt Gray Lid</td> <td>900ICON216</td> </tr> <tr> <td>Protective Carry-case</td> <td>900ICON308</td> </tr> <tr> <td>Soft Carry-case</td> <td>900ICON315</td> </tr> <tr> <td>Use and Care Manual</td> <td></td> </tr> <tr> <td> 3-Language</td> <td>185046221</td> </tr> <tr> <td> 17-Language</td> <td>185045354</td> </tr> <tr> <td>Healthcare Provider CD</td> <td>900ICON110</td> </tr> <tr> <td>F&P InfoSmart™ CD</td> <td>900ICON100</td> </tr> <tr> <td>SmartStick™ Studio CD</td> <td>900ICON112</td> </tr> </table>	Water Chamber	900ICON200	SmartStick™	900ICON202	SmartStick™ Net	900ICON203	Elbow	900ICON204	Outlet Seal	900ICON206	ThermoSmart™ Breathing Tube	900ICON208	Breathing Tube	900HC221	Air Filter	900ICON503	Filter Grill	900ICON218	Silver Gloss Lid	900ICON214	Matt Gray Lid	900ICON216	Protective Carry-case	900ICON308	Soft Carry-case	900ICON315	Use and Care Manual		3-Language	185046221	17-Language	185045354	Healthcare Provider CD	900ICON110	F&P InfoSmart™ CD	900ICON100	SmartStick™ Studio CD	900ICON112	<p>Dimensions 6.3 x 6.7 x 8.7 in (160 x 170 x 220 mm)</p> <p>Weight 4.8 lb (2.2 kg) Packed Weight: 8.7 lb (4.0 kg)</p> <p>Performance Pressure Range: 4 to 20 cmH₂O</p> <p>Noise Level < 30 dBA</p> <p>Standards Compliance IEC60601-1: 1998, AS/NZS 3200.1.0: 1998, EN60601-1: 1990 + A1 - A2</p> <p>SmartStick™ Data Recording The SmartStick™ records up to 365 days of summary compliance and efficacy data, 30 days of detailed efficacy data (AHI, Pressure, Leak), as well as cumulative data from first use.</p> <p>Electrical Ratings</p> <table border="1"> <thead> <tr> <th>RATED SUPPLY VOLTAGE</th> <th>RATED CURRENT INPUT</th> <th>RATED SUPPLY FREQUENCY</th> </tr> </thead> <tbody> <tr> <td>100-115 V</td> <td>1.27 A (1.43 A Max)</td> <td>50-60 Hz/400 Hz</td> </tr> <tr> <td>220-240 V</td> <td>1.07 A (1.21 A Max)</td> <td>50-60 Hz</td> </tr> </tbody> </table>	RATED SUPPLY VOLTAGE	RATED CURRENT INPUT	RATED SUPPLY FREQUENCY	100-115 V	1.27 A (1.43 A Max)	50-60 Hz/400 Hz	220-240 V	1.07 A (1.21 A Max)	50-60 Hz
Water Chamber	900ICON200																																																
SmartStick™	900ICON202																																																
SmartStick™ Net	900ICON203																																																
Elbow	900ICON204																																																
Outlet Seal	900ICON206																																																
ThermoSmart™ Breathing Tube	900ICON208																																																
Breathing Tube	900HC221																																																
Air Filter	900ICON503																																																
Filter Grill	900ICON218																																																
Silver Gloss Lid	900ICON214																																																
Matt Gray Lid	900ICON216																																																
Protective Carry-case	900ICON308																																																
Soft Carry-case	900ICON315																																																
Use and Care Manual																																																	
3-Language	185046221																																																
17-Language	185045354																																																
Healthcare Provider CD	900ICON110																																																
F&P InfoSmart™ CD	900ICON100																																																
SmartStick™ Studio CD	900ICON112																																																
RATED SUPPLY VOLTAGE	RATED CURRENT INPUT	RATED SUPPLY FREQUENCY																																															
100-115 V	1.27 A (1.43 A Max)	50-60 Hz/400 Hz																																															
220-240 V	1.07 A (1.21 A Max)	50-60 Hz																																															

F&P ICON™ Models and Features Matrix

PERFORMANCE FEATURES	Auto		Premo	Novo
	ICONAAX	ICONABX	ICONPBX	ICONNAX
Fully integrated	•	•	•	•
ThermoSmart™ Technology**	•	•	•	•
Auto-Adjusting Pressure	•	•		
Efficacy Reporting	•	•	•	
Compliance Reporting	•	•	•	•
SmartStick™	•	•	•	•
SensAwake™	•			
Proportional Ramp	•	•	•	•
Auto-Altitude Adjusting	Automatic	Automatic	Automatic	Manual
Leak Compensation	•	•	•	
Clock and AlarmTunes™	•	•	•	•
InfoSmart™ Technologies	Advanced	Advanced	Advanced	Basic

NOTE: The X denotes country variant

* Part may vary depending on country

** In some countries the ThermoSmart™ Breathing Tube needs to be purchased as an accessory to activate ThermoSmart™ Technology

www.fphcare.com

© 2010 Fisher & Paykel Healthcare Limited

Manufacturer Fisher & Paykel Healthcare Ltd, 15 Maurice Paykel Place, East Tamaki, Auckland 2013, PO Box 14 348, Panmure, Auckland 1741, New Zealand Tel: +64 9 574 0100 Fax: +64 9 574 0158 Email: info@fphcare.co.nz Web: www.fphcare.com **Australia** Tel: +61 3 9879 5022 Fax: +61 3 9879 5232 **Austria** Tel: 0800 29 31 23 Fax: 0800 29 31 22 **Benelux** Tel: +31 40 216 3555 Fax: +31 40 216 3554 **China** Tel: +86 20 3205 3486 Fax: +86 20 3205 2132 **France** Tel: +33 1 6446 5201 Fax: +33 1 6446 5221 **Germany** Tel: +49 7181 98599 0 Fax: +49 7181 98599 66 **India** Tel: +91 80 4284 4000 Fax: +91 80 4123 6044 **Irish Republic** Tel: 1800 409 011 **Italy** Tel: +39 06 7839 2939 Fax: +39 06 7814 7709 **Japan** Tel: +81 3 3661 7205 Fax: +81 3 3661 7206 **Northern Ireland** Tel: +0800 132 189 **Spain** Tel: +34 902 013 346 Fax: +34 902 013 379 **Sweden** Tel: +46 8 564 76 680 Fax: +46 8 36 63 10 **Switzerland** Tel: 0800 83 47 63 Fax: 0800 83 47 54 **Taiwan** Tel: +886 2 8751 1739 Fax: +886 2 8751 5625 **Turkey** Tel: +90 312 354 34 12 Fax: +90 312 354 31 01 **UK (EU Authorised Representative)** Fisher & Paykel Healthcare Ltd, Unit 16, Cordwallis Park, Clivemont Road, Maidenhead, Berkshire SL6 7BU, UK Tel: +44 1628 626 136 Fax: +44 1628 626 146 **USA** Tel: +1 800 446 3908 or +1 949 453 4000 Fax: +1 949 453 4001