

Provided for your reference by  
**cpapXchange.com**

**Manufactured by:**

**ResMed Ltd** 97 Waterloo Road North Ryde NSW 2113 Australia Tel: +61 (2) 9886 5000 or 1 800 658 189 (toll free) Fax: +61 (2) 9878 0120 Email: reception@resmed.com.au

**ResMed Offices:**

**ResMed Corp** 14040 Danielson Street Poway CA 92064-6857 USA Tel: +1 (858) 746-2400 or 1-800-424-0737 (toll free) Fax: +1 (858) 746-2900 Email: reception@resmed.com

**ResMed (UK) Ltd** 65 Milton Park Abingdon Oxfordshire OX14 4RX UK

Tel: +44 (1235) 862 997 Fax: +44 (1235) 831 336 Email: reception@resmed.co.uk

**ResMed Asia Pacific Ltd** 97 Waterloo Road North Ryde NSW 2113 Australia

Tel: +61 (2) 9886 5000 or 1 800 991 900 (toll free) Fax: +61 (2) 9889 1471

Email: reception@resmed.com.au

**ResMed Finland** Niittykatu 6 FIN 02200 ESPOO Suomi Puh: +358 9 8676820

Faksi: +358 9 86768222 Sähköposti: reception@resmed.fi

**ResMed GmbH & Co. KG** Rudolfstraße 10 D-41068 Mönchengladbach Deutschland

Tel: +49 (0) 2161-3521-0 (Reception), +49 (0) 180 22 22 668 (Service-Telefon; 0,06 €/Anruf),

+49 (0) 180 22 66 888 (Wartungstelefon; 0,06 €/Anruf) Fax: +49 (0) 2161-3521-1499

Email: reception@resmed.de

**ResMed Japan** Nihonbashi Hisamatsu Bldg. 4F, 2-28-1 Nihonbashi-Hamacho, Chuo-Ku,

Tokyo 103-0007, Japan Tel: +81 (3) 3662 5056 Fax: +81 (3) 3662 5040

**ResMed Malaysia Sdn Bhd** Suite E-10-20, Plaza Mon't Kiara No. 2, Jalan 1/70C, Mon't Kiara

50480 Kuala Lumpur, Malaysia Tel: +60 3 6201 7177 Fax: +60 3 6201 2177

Email: reception@resmed.com.my

**ResMed NZ Ltd** PO Box 51-048 Pakuranga Auckland New Zealand Mob: +64 274 737 633

Fax: +64 9 239 0193 Email: reception@resmed.co.nz

**ResMed SA** Parc de la Bandonnière 2, rue Maurice Audibert 69800 Saint-Priest France

Tel: +33 (0) 4 37 251 251 Fax: +33 (0) 4 37 251 260 Email: reception@resmed.fr

**ResMed Singapore Pte Ltd** 57 Ubi Avenue 1 #07-09 Ubi Centre Singapore 408936

Tel: +65 6284 7177 Fax: +65 6284 7787 Email: reception@resmed.com.sg

**ResMed Spain SL C/ Arturo Soria, 245 28033 Madrid España**

Tel: +34 (93) 5908154 Fax: +34 (93) 5908153 Email: angelo@resmed.es

**ResMed Sweden AB** Industrigatan 2 S-461 37 Trollhättan Sverige Tel: +46 520 420 110

Fax: +46 520 397 15 Email: reception@resmed.se

**Labhardt AG** Thannerstrasse 57 CH-4054 Basel Schweiz Tel: +41 (061) 307 9711

Fax: +41 (061) 307 9722 Email: info@labhardt.ch

**US DESIGNATED AGENT:** ResMed Corp

**EU AUTHORISED REPRESENTATIVE:** ResMed (UK) Ltd

**www.resmed.com**

Velcro is a registered trademark of Velcro Industries B.V.

**Mirage Activa Mask**

Protected by patents: AU 710733, AU 712236, AU 724360, AU 741003, DE 29724224, US

6112746, US 6357441, US 6439230, US 6463931, US 6532961, US 6561190, US 6561191. Other

patents pending. Protected by design registrations: DE 40301991. Others pending.

Activa, ActiveCell, AutoSet, AutoSet T, Mirage and  are trademarks of ResMed Ltd.

© 2003 ResMed Ltd.

**RESMED**



**Mirage Activa™ Mask**

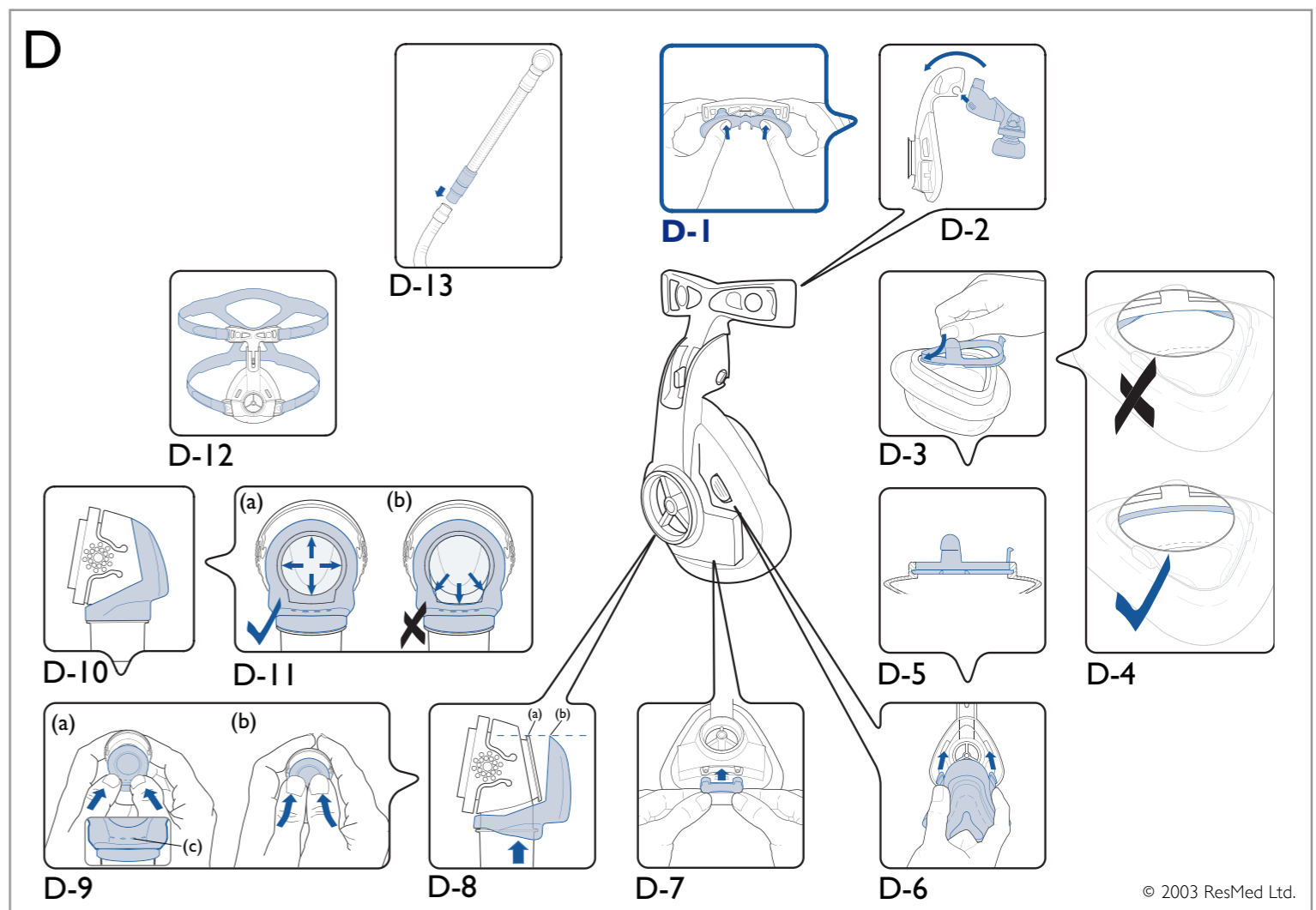
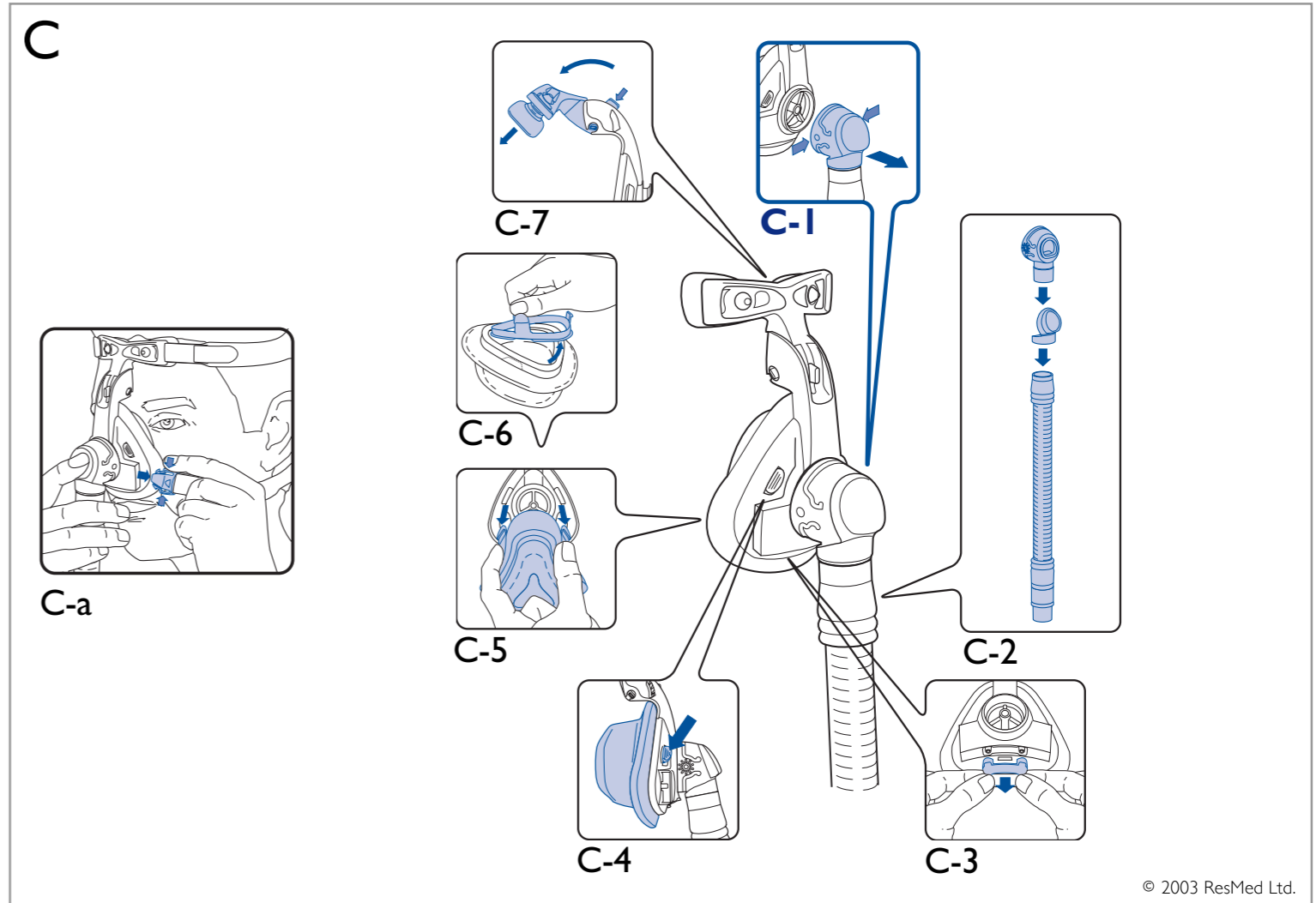
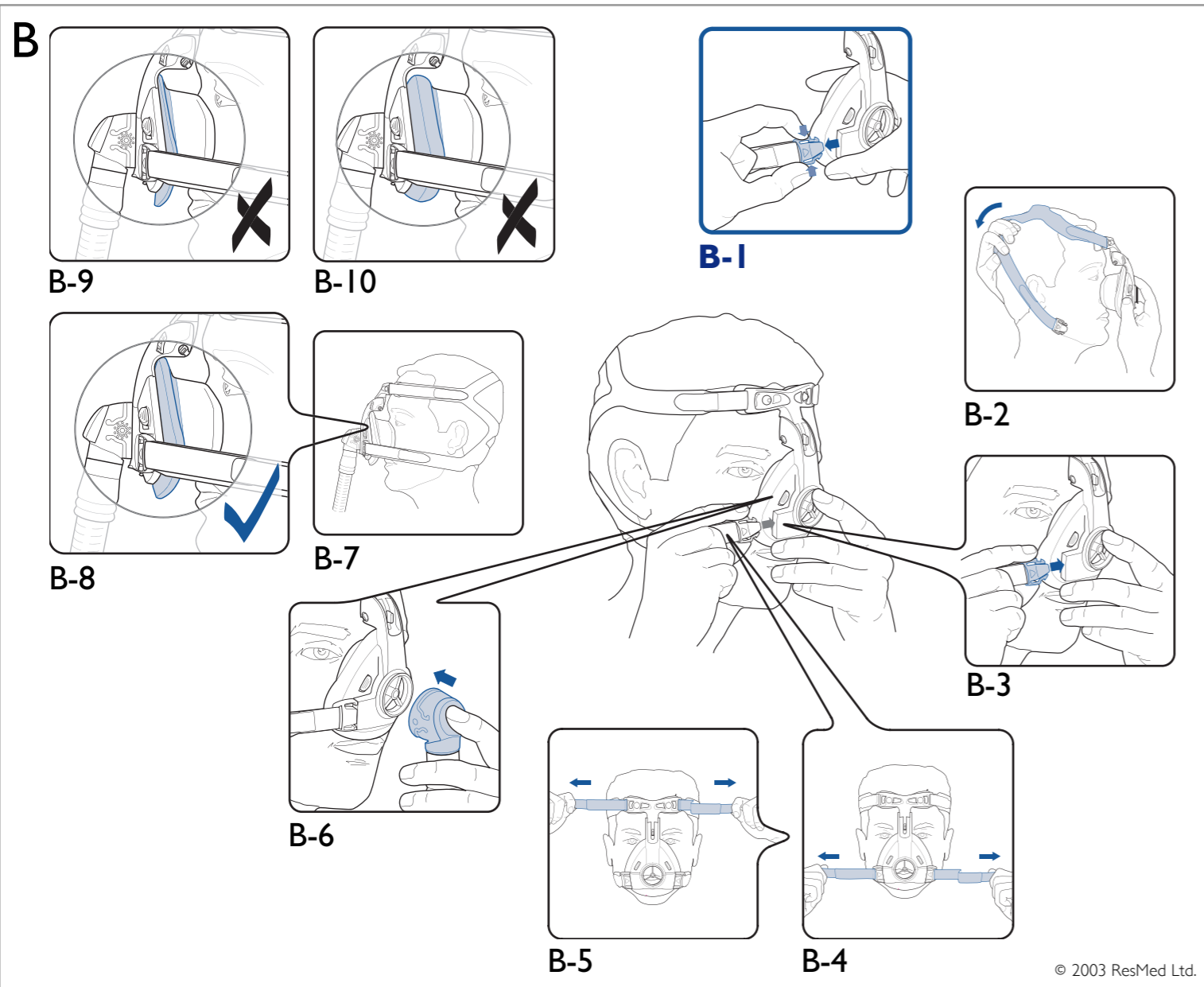
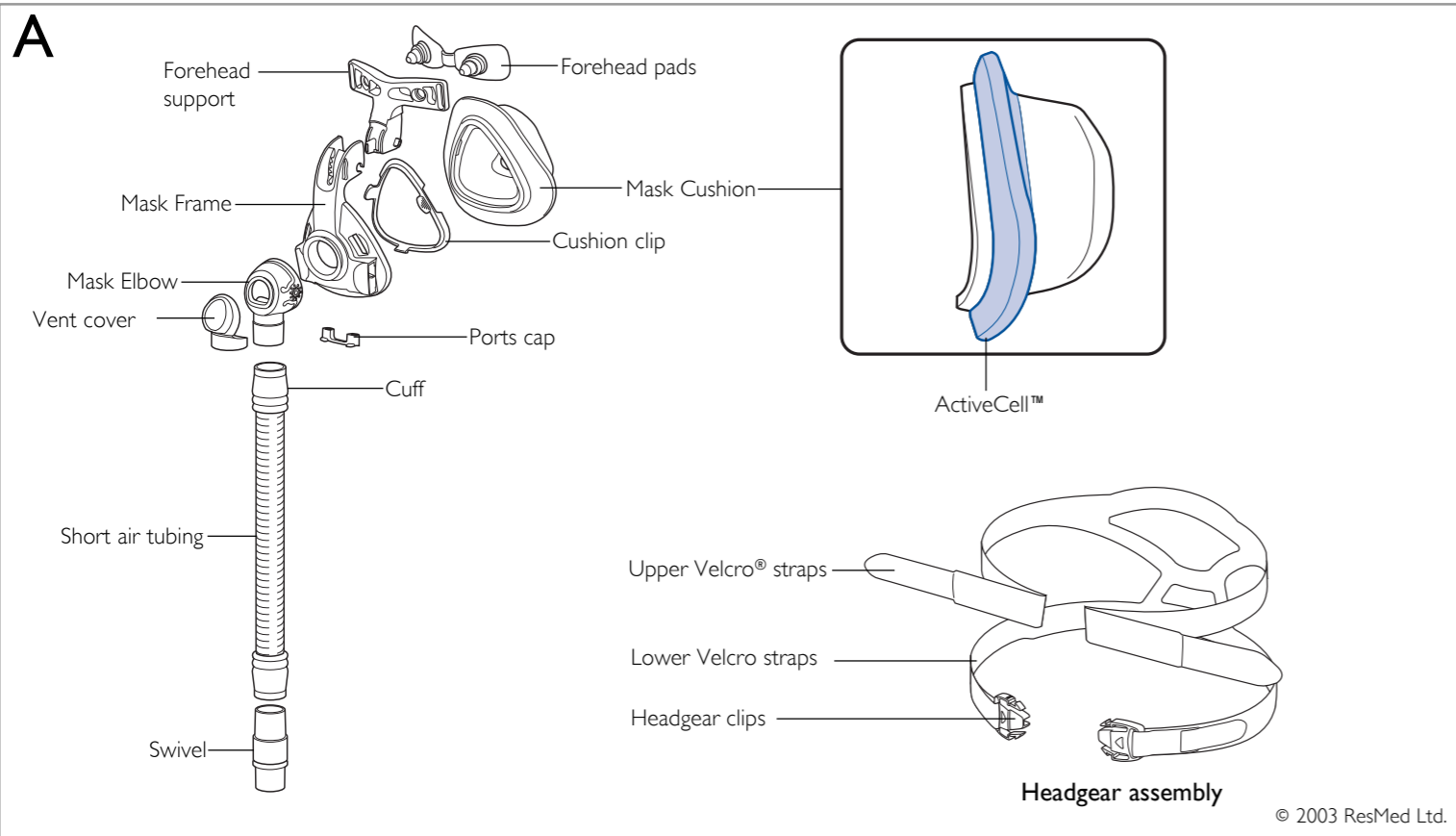
Reorder number: 60840/1 03 11

**USER'S GUIDE**

English



0120





## Mirage Activa™ Mask

---

The MIRAGE ACTIVA™ mask is an accessory to a non-continuous ventilator (respirator), intended for multi-patient use for adult patients prescribed continuous positive airway pressure (CPAP) or bilevel therapy in hospital, clinic, and/or home environments.

### MEDICAL INFORMATION

**Note:** *The mask system does not contain latex materials.*



#### WARNINGS

- This mask should be used only with CPAP or bilevel systems recommended by your physician or respiratory therapist. A mask should not be used unless the CPAP or bilevel system is turned on and operating properly. The exhalation device should never be blocked.

**Explanation of the Warning:** CPAP or bilevel systems are intended to be used with special masks with connectors which have vent holes or separate exhalation devices to allow continuous flow of air out of the mask. When the CPAP or bilevel device is turned on and functioning properly, new air from the flow generator flushes the exhaled air out through the attached mask exhalation port. However, when the CPAP or bilevel device is not operating, enough fresh air will not be provided through the mask, and exhaled air may be rebreathed. Rebreathing of exhaled air for longer than several

minutes can in some circumstances lead to suffocation. This warning applies to most models of CPAP or bilevel systems.

- The exhaust vent flow is lower at lower mask pressures (see “Pressure/Flow Curve” on page 9). If the mask pressure during expiration is too low, there may not be enough exhaust vent flow to completely flush the air delivery hose of exhaled air before the start of the next inspiration.
- The **MIRAGE ACTIVA** features an elbow that can be easily removed while the mask is fitted. The mask should not be used with the elbow attached unless the CPAP or bilevel system is turned on and operating properly.
- If oxygen is used with the CPAP or bilevel device, the oxygen flow must be turned off when the flow generator is not operating.

**Explanation of the Warning:** When the CPAP or bilevel device is not in operation, and the oxygen flow is left on, oxygen delivered into the ventilator tubing may accumulate within the flow generator enclosure. Oxygen accumulated in the CPAP or bilevel device enclosure will create a risk of fire. This warning applies to most types of CPAP or bilevel flow generators.

- Please refrain from smoking while oxygen is in use.

**Note:** *At a fixed flow rate of supplemental oxygen flow, the inhaled oxygen concentration will vary depending on: pressure settings, patient breathing pattern, mask selection and leak rate.*

## PARTS OF THE MASK

See **Figure A** for a list of all parts.

The **MIRAGE ACTIVA** mask cushion uses ResMed's innovative **ACTIVECELL™** technology. The **ACTIVECELL** is an expandable chamber that inflates during therapy. This technology means that the **MIRAGE ACTIVA** is "self sealing" as it responds to factors that

cause leak. This provides you with a better seal, especially when you are moving during the night. The **ACTIVECELL** technology does not require as much headgear strap tension as other masks, which makes the **MIRAGE ACTIVA** more comfortable to use.

## FITTING THE MASK

**Note:** Before fitting the mask, refer to the section on “Cleaning the Mask in the Home” on page 6.

- 1 Squeeze one of the headgear clips to release it from the mask frame (**Fig. B-1**).
- 2 Place the mask cushion over your nose.
- 3 Pull the headgear over your head (**Fig. B-2**). Make sure the lower straps pass below your ears, and the upper straps pass over your forehead.
- 4 Connect the free headgear clip to the mask frame (**Fig. B-3**).
- 5 Adjust the lower (**Fig. B-4**) and then the upper (**Fig. B-5**) straps of the headgear so the cushion sits loosely on your face. Do not tighten the headgear straps at this stage.
- 6 The pads of the forehead support should lightly touch your forehead when the mask is in place.

Adjust the forehead support by depressing its tab and moving it to one of the other slot positions (**Fig. C-7**).

- 7 Connect one end of the main air tubing to your CPAP or bilevel device and the other end to the swivel (**Fig. D-10**).

**Note:** The swivel, short air tubing and mask elbow are supplied assembled.

- 8 Connect the mask elbow to the mask frame. To do this, firmly push the mask elbow onto the mask frame until it clicks into place (**Fig. B-6**).

Check that you have connected the mask elbow correctly by rotating it. Be careful not to squeeze the sides of the elbow as

it may release from the mask frame. If the mask elbow is fitted correctly, it should rotate freely and not separate from the mask frame.

**9** The fitted mask should look like this (**Fig. B-7**).

**10** Turn your flow generator on. If you feel air leaks around the cushion, reposition the mask on your face to achieve a better seal. You may also need to readjust the headgear straps or forehead support.

Do not over-tighten the straps. The straps should be adjusted so that the **ACTIVECELL** is moderately and evenly expanded as shown in **Figure B-8**.

The **ACTIVECELL** should not be collapsed (**Fig. B-9**) or over-expanded (**Fig. B-10**).

Take time to adjust the straps and the position of the mask to achieve a comfortable and secure fit. If you feel excessive pressure on your nasal bridge or upper lip, adjust the forehead support.

**Note:** Select "Standard" as the mask option, when using ResMed AutoSet® devices.

## REMOVING THE MASK

To remove the **MIRAGE ACTIVA** mask, squeeze the headgear clips (**Fig. C-a**). This releases the headgear clips from the mask frame. Pull the mask and headgear away from your head.

**Note:** Do not pull the headgear off your head without releasing the headgear clips first.

## TIP!

You can detach the elbow from the mask frame while wearing the mask (see “Disassembling For Cleaning”). This is useful when therapy needs to be stopped for a short time; for example if you need to go to the bathroom.

## DISASSEMBLING FOR CLEANING

- 1 Detach the mask elbow. To do this, squeeze the raised dots on the sides of the mask elbow while pulling it away from the mask frame (**Fig. C-1**).
- 2 Disconnect and separate the main air tubing, short air tubing, mask elbow and vent cover (**Fig. C-2**).

### Notes

- *To prevent damage to the short air tubing, disconnect it by holding it at the cuff.*
  - *The swivel does not need to be disconnected from the short air tubing.*
- 3 Squeeze the headgear clips to release them from the mask frame. Unfasten the Velcro® straps and unthread the upper headgear straps through the slots of the forehead support.
  - 4 Remove the ports cap from the mask frame (**Fig. C-3**).
  - 5 Detach the cushion assembly from the mask frame. To do this, squeeze the two side latches on the cushion clip until they disengage from the mask frame (**Fig. C-4**). Then pull the mask cushion assembly out and away from the mask frame (**Fig. C-5**).
  - 6 Remove the cushion clip from the mask cushion. To do this, roll back one end of the ACTIVECELL and pull the cushion clip out (**Fig. C-6**).
  - 7 Depress the forehead support tab and move it past the top slot position (**Fig. C-7**). This allows you to remove the forehead support from the mask frame.

Pull firmly at the base of the forehead pad plugs to release the forehead pads from the forehead support.

## CLEANING THE MASK IN THE HOME

*Note: Wash the headgear before first time use, as the dye may run. It is important to always hand wash the headgear.*

### WEEKLY

Hand wash the headgear in lukewarm, soapy water. Use pure soap. Rinse well and allow it to air dry out of direct sunlight.

### DAILY/AFTER EACH USE

Hand wash the mask components in lukewarm, soapy water. Use pure soap. Rinse the components well and allow them to air dry out of direct sunlight.



### CAUTIONS

- Do not use solutions containing bleach, chlorine, alcohol, aromatics, moisturisers, antibacterial agents, or scented oils to clean any part of the mask system or air tubing. These solutions may cause damage and reduce the life of the product.
- Do not expose any part of the mask system or tubing to direct sunlight as it may cause the product to deteriorate.
- If any visible deterioration of a mask component is apparent (cracking, crazing, tears, etc), the mask component should be discarded and replaced.

# CLEANING THE MASK BETWEEN PATIENTS

The mask system (excluding the swivel and short air tubing) is validated for multipatient use. Clinicians should refer to the *Masks Disinfection/Sterilisation Guide* for details.

To clean the headgear between patients use the method described in the previous section “Cleaning the Mask in the Home”.

## REASSEMBLING THE MASK

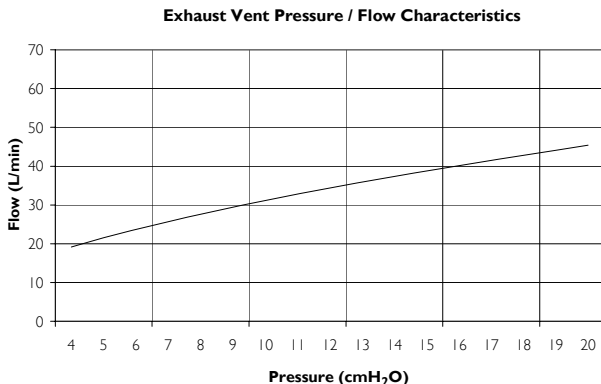
- 1 Attach the forehead pads to the forehead support. To do this, place the forehead pad plugs into the two round holes of the forehead support. Then push firmly behind the base of the forehead pad plugs (**Fig. D-1**) until the tip of the plug is securely seated over the hole. The base of the forehead pad plug should be flush against the forehead support.
- 2 Reconnect the forehead support to the mask frame (**Fig. D-2**). Depress the tab and move the forehead support into one of the four slot positions.
- 3 Fit the cushion clip into the groove of the mask cushion. Ensure the cut outs under the cushion clip latches are aligned with the blocks in the groove of the mask cushion. Fit the top section first (**Fig. D-3**), then work your way around, inserting the cushion clip into the mask cushion. Ensure that the cushion clip does not pinch any part of the mask cushion (**Fig. D-4**). The cushion clip should fit snugly inside the groove of the mask cushion (**Fig. D-5**).
- 4 Attach the cushion assembly to the mask frame. To do this, align the two side latches on the cushion clip to the top two holes on the mask frame (**Fig. D-6**). Then push the cushion assembly onto the mask frame firmly until the latches click into place. Ensure the bottom latch is also secure.

- 5 Push the ports cap onto the mask ports (**Fig. D-7**).
- 6 Attach the vent cover to the mask elbow. To do this, slide the vent cover along the elbow until the tops of the vent cover (**Fig. D-8b**) and the ridge of the vent opening (**Fig. D-8a**) are aligned. Then push the vent holes (**Fig. D-9c**) in and slide the vent cover up over the ridge of the vent opening (**Fig. D-9a & Fig. D-9b**). The fitted vent cover should look like **Fig. D-10**. Ensure that the lip of the vent cover is securely seated over the ridge of the vent opening. It should form a perfect circle around the ridge of the vent opening (**Fig. D-11a**) and not be distorted (**Fig. D-11b**).
- 7 Connect the short air tubing to the mask elbow.
- 8 Connect the headgear clips to the mask frame.
- 9 Thread the upper straps of the headgear through the slots on the forehead support and fasten the Velcro straps (**Fig. D-12**). The headgear label should face outwards and be near your neck when fitted.
- 10 Connect the swivel to the main air tubing ready for next use (**Fig. D-13**).
- 11 When ready for use, connect the mask elbow to the mask frame (**Fig. B-6**).

# TECHNICAL SPECIFICATIONS

## PRESSURE/FLOW CURVE

The following graph shows the rate of air flow through the mask vents at varying mask pressures.



## DEAD SPACE INFORMATION

The dead space of the **MIRAGE ACTIVA** mask is 127mL.

**Explanation:** Dead space is the empty volume of the mask up to the elbow.

## LIMITED WARRANTY

ResMed warrants that your ResMed mask system, including its components: mask frame, cushion, headgear, tubing and other accessories (“Product”) shall be free from defects in material and workmanship for a period of ninety (90) days from the date of purchase by the initial consumer.

For further details refer to the Warranty.

