

RESMED

Provided for your reference by

cpapXchange.com

Swift™ LT for Her

NASAL PILLOWS SYSTEM

User Guide

English



Swift™ LT for Her

NASAL PILLOWS SYSTEM

Rx Only

Thank you for choosing the Swift LT.

Intended Use

The Swift LT channels airflow noninvasively to a patient from a positive airway pressure device such as a continuous positive airway pressure (CPAP) or bilevel system.

The Swift LT is:

- to be used by adult patients (> 66 lb/30 kg) for whom positive airway pressure has been prescribed
- intended for single-patient re-use in the home environment and multipatient re-use in the hospital/institutional environment.

Using the Swift LT for Her

When using the Swift LT with ResMed flow generators that have mask setting options, if available select 'SWIFT'; otherwise select 'MIRAGE' as the mask option.

Notes:

- *The Swift LT is not compatible for use with ResMed AutoSet CS™ 2 and VPAP™ Adapt SV devices.*
- *SmartStop may not operate effectively when using Swift LT with some flow generators that have this feature.*
- *If you experience nasal dryness or irritation, use of a humidifier is recommended.*

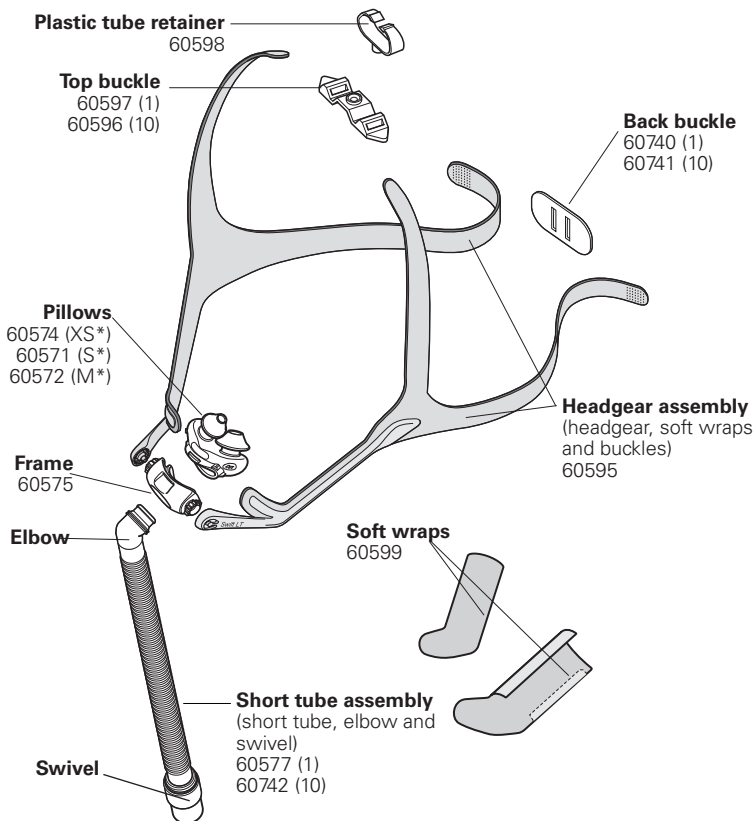
For a full list of compatible devices for this mask, see the Mask/Device Compatibility List on www.resmed.com on the **Products** page under **Service & Support**. If you do not have internet access, please contact your ResMed representative.

Parts of the Swift LT for Her & Ordering Information

Complete system
(includes XS*, S* and
M* pillows)**
60588

Frame system
(pillows, frame, short
tube assembly)
XS* **60585** S* **60582**
M* **60583** L* **60584**

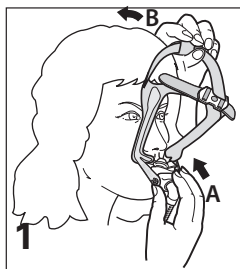
Frame assembly
(frame, short tube assembly)
60581



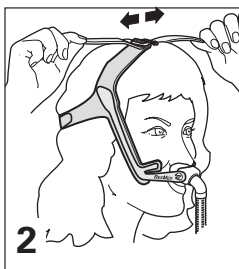
* XS Extra Small, S Small, M Medium, L Large

** Note: Large pillows are available separately 60573 (L)

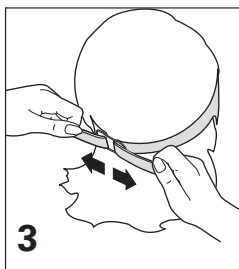
Fitting your Swift LT for Her



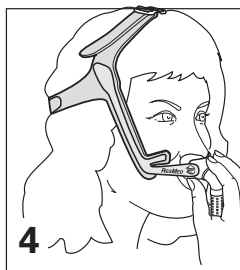
(A) Hold the pillows at your nose; **(B)** pull the headgear over your head.



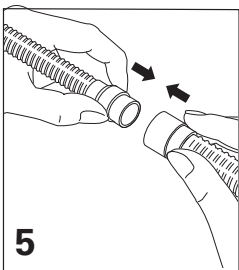
Adjust top straps (overtightening may cause excess pressure on your nose).



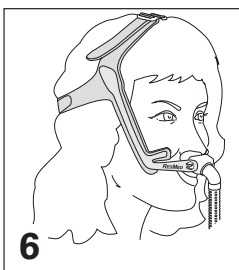
Adjust each end of the backstrap (overtightening may cause excess pressure on upper lip).



Rotate frame to adjust pillow angle to ensure it sits comfortably.

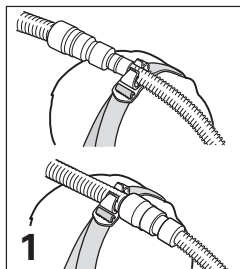


Connect the short tube to the flow generator's air tubing.

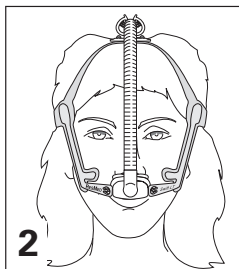


The Swift LT is now fitted and ready for use. Headgear should sit midway between ear and eye.

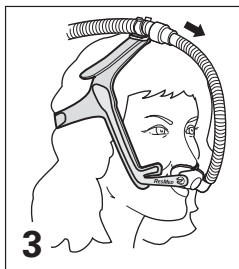
Using the Plastic Tube Retainer (Optional)



Push tube retainer into buckle. Clip either short tube or air tubing to tube retainer.

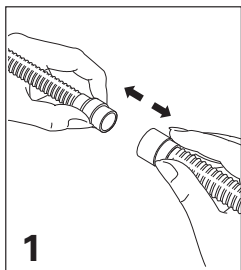


When using the tube retainer, the tubing can be positioned to either side of your face or centered.

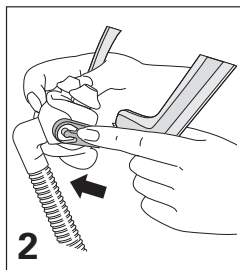


If the mask pulls on your nose, increase length of tube between mask and tube retainer.

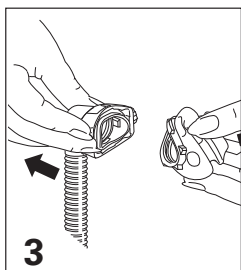
Disassembling your Swift LT for Her



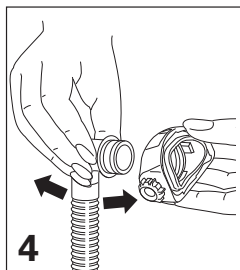
1
Detach air tubing from short tube.



2
Remove headgear from frame.



3
Remove pillows from frame.



4
Remove elbow from frame.

Cleaning your Swift LT for Her in the home

Notes:

- *The nasal pillows system, soft wraps and headgear should be cleaned by handwashing.*
- *The soft wraps should be removed from the headgear before handwashing.*
- *The remainder of the headgear may be washed without being disassembled.*



WARNING

Do not use aromatic-based solutions or scented oils (eg, eucalyptus or essential oils), bleach, alcohol or products that smell strongly (eg, citrus) to clean any of the system's components. Residual vapours from these solutions can be inhaled if not rinsed thoroughly. They may also damage the system, causing cracks.



CAUTION

If any visible deterioration of a system component is apparent (cracking, crazing, tears etc.), the component should be discarded and replaced.

Daily/After Each Use

Handwash the separated mask components (excluding headgear) by gently rubbing in warm (approx. 86°F/30°C) water using mild soap for one minute. Rinse all components well with drinking quality water and allow them to air dry out of direct sunlight.

Weekly

Handwash the headgear, soft wraps and tube retainer in warm (approx. 86°F/30°C) water using mild soap. Rinse well and allow them to air dry out of direct sunlight.

Reprocessing your Swift LT for Her between Patients

The Nasal Pillows System should be reprocessed when used between patients. Cleaning, disinfection and sterilization instructions are available from the ResMed website, www.resmed.com/masks/sterilization/americas. If you do not have Internet access, please contact your ResMed representative.

Storage

Ensure that your Swift LT is thoroughly clean and dry before storing it for any length of time. Store the mask in a cool dry place out of direct sunlight.

Disposal

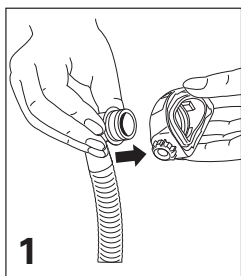
The Swift LT does not contain any hazardous substances and may be disposed of with your normal household refuse.

Limited Warranty

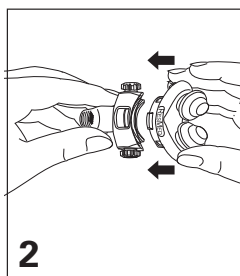
ResMed warrants that your ResMed system, including its components: frame, pillow sleeve, headgear, tubing and other accessories (“Product”) shall be free from defects in material and workmanship for a period of ninety (90) days from the date of purchase by the initial consumer.

For further details refer to the Warranty.

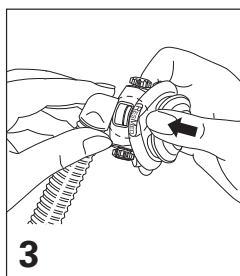
Reassembling your Swift LT for Her



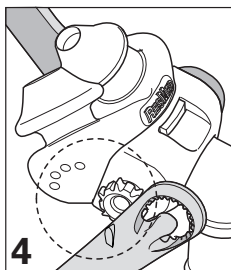
1 Insert elbow into frame.



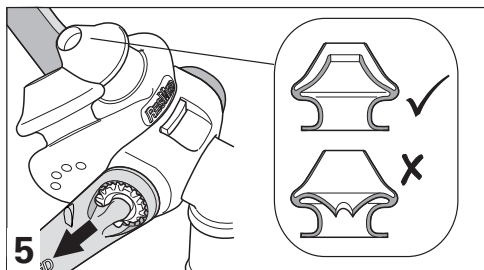
2 Align pillows with frame.



3 Push pillows firmly into frame. Ensure top and bottom retention tabs slot into place.

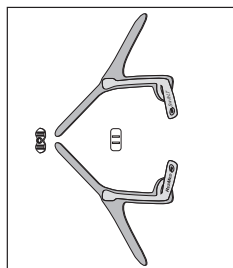


4 Check positioning markers on pillows and headgear are on the same side.

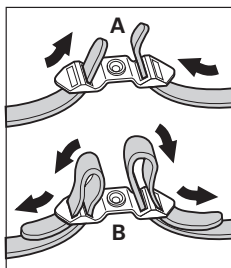


5 Slide left and right headgear stability arms onto frame. Ensure inner wall of pillows is in correct position. If not, squeeze pillow sides to release inner walls.

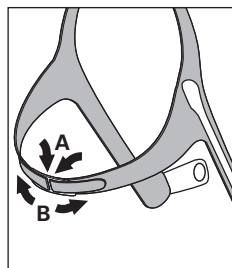
Reassembling the headgear



Lay out the headgear as shown, writing facing upwards.



(A) Thread the top straps through the top buckle, then **(B)** back over to secure.



(A) Thread both backstraps through the back buckle (Velcro™ facing outwards), then **(B)** fold back over to secure.

Troubleshooting

Possible reason	Solution
-----------------	----------

Pillows won't seal properly, are uncomfortable or cause red marks.

Pillows may have been fitted incorrectly, incorrectly adjusted, or the headgear is too tight.	Carefully follow instructions in "Fitting your Swift LT". Check headgear is not over-tightened. Check ResMed logo on top of pillows is facing outwards.
Inner wall position of one/ both pillows is incorrect.	Squeeze pillow sides to release inner wall. The correct position is shown in "Reassembling your Swift LT".
Pillows are wrong size.	Talk to your clinician.
Pillows may be dirty.	Clean pillows according to instructions in "Cleaning your Swift LT in the Home".

Nasal pillows system is too noisy

System is assembled incorrectly.	Reassemble the Swift LT. Make sure the pillows are fully inserted into the frame.
----------------------------------	---

Before using your Swift LT for Her



WARNINGS

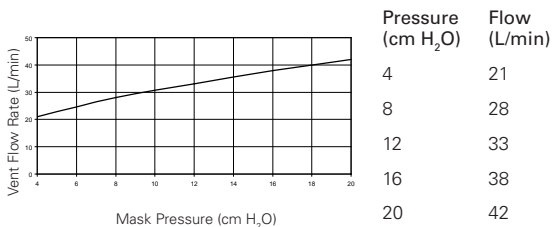
- The vent holes must be kept clear.
- The mask should not be used unless the CPAP system is turned on and operating properly.
- Follow all precautions when using supplemental oxygen.
- Oxygen flow must be turned off when the flow generator is not operating, so that unused oxygen does not accumulate within the flow generator enclosure and create a risk of fire.
- At a fixed flow rate of supplemental oxygen flow, the inhaled oxygen concentration varies, depending on the pressure settings, patient breathing pattern, mask, point of application and leak rate.
- The technical specifications of the mask are provided for your clinician to check that they are compatible with the flow generator. If used outside specification or if used with incompatible devices, the seal and comfort of the mask may not be effective, optimum therapy may not be achieved, and leak, or variation in the rate of leak, may affect the flow generator function.
- Discontinue using the Swift LT if you have ANY adverse reaction to the use of the mask, and consult your physician or sleep therapist.
- As with all masks, some rebreathing may occur at low CPAP pressures.
- Refer to your flow generator manual for details on settings and operational information.
- Remove all packaging before using the mask.

Technical specifications

Note: The mask system does not contain latex, PVC or DEHP materials.

Pressure-Flow Curve

Note: The mask contains passive venting to protect against rebreathing. As a result of manufacturing variations, the vent flow rate may vary.



Dead Space Information

Physical dead space is the empty volume of the mask to the end of the swivel. Using the large cushions this is 94 mL.

Therapy Pressure

4 to 20 cm H₂O.

Resistance

Drop in pressure measured (nominal) at 50 L/min: 0.54 cm H₂O and at 100 L/min: 1.95 cm H₂O.

Sound

DECLARED DUAL-NUMBER NOISE EMISSION VALUES in accordance with ISO 4871. The A-weighted sound power level of the mask is 25 dBA, with uncertainty 3 dBA. The A-weighted sound pressure level of the mask at a distance of 1 m is 17 dBA, with uncertainty 3 dBA.

Environmental Conditions




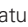
Operating temperature: +41°F to 104°F (+5°C to +40°C)
 Operating humidity: up to 95% non-condensing
 Storage and transport temperature: -4°F to 140°F (-20°C to +60°C)
 Storage and transport humidity: up to 95% non-condensing.

Gross Dimensions

380 mm (H) x 57 mm (W) x 62 mm (D). Mask fully assembled with short tube assembly – no headgear.

Note: The manufacturer reserves the right to change these specifications without notice.

Symbols

⚠ Caution, consult accompanying documents; LOT Lot number; REF Part number;  Temperature limitation;  Humidity limitation;  Does not contain latex;  Indicates a Warning or Caution and alerts you to a possible injury or explains special measures for the safe and effective use of the device.

ResMed Ltd (Manufacturer) 1 Elizabeth Macarthur Drive Bella Vista NSW 2153 Australia
ResMed Corp (US Designated Agent) 14040 Danielson Street Poway CA 92064-6857 USA
ResMed (UK) Ltd (EU Authorized Representative) 96 Milton Park Abingdon Oxfordshire OX14 4RY UK

ResMed Offices Australia, Austria, Belgium, Brazil, China, Finland, France, Germany, Greece, Hong Kong, India, Ireland, Italy, Japan, Malaysia, Mexico, Netherlands, New Zealand, Norway, Portugal, Singapore, South Africa, Spain, Sweden, Switzerland, UK, USA (see www.resmed.com for contact details).

Swift LT Nasal Pillows System

Protected by patents: AU 785376, DE 20321468.4, DE 20321469.2, DE 20321470.6, DE 20321471.4, DE 20321472.2, EP 1314445, NZ 562417, NZ 562418, NZ 562419, NZ 553756, NZ 553757, NZ 553822, NZ 553824, NZ 553825, US 6581594, US 6823865, US 7159587, US 7318437.
Other patents pending.

Protected by design registrations: AU 301943, CN 200430102469.3, JP 1243026, NZ 407161, US D552731. Others designs pending.

Swift, AutoSet CS and VPAP are trademarks of ResMed Ltd and are registered in U.S. Patent and Trademark Office.

Velcro is a registered trademark of Velcro Industries B.V.

© 2008 ResMed Ltd.



608241-Eng/2 08 11

SWIFT LT for Her

USER

AMER MULTI

