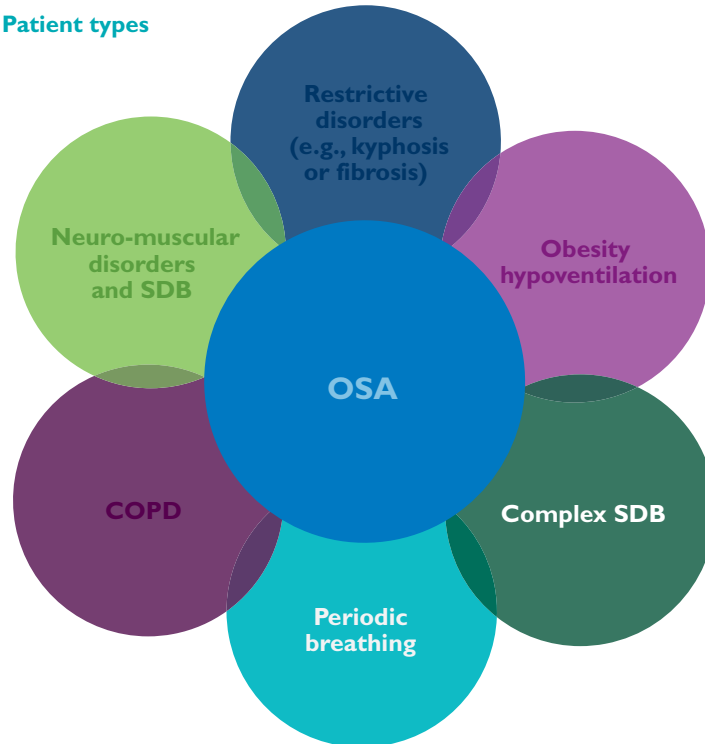




BiPAP autoSV Advanced

Protocol for periodic and complex breathing

Patient types



Provided for your reference by
cpapXchange.com

- BiPAP autoSV Advanced is designed for patients who have mixed apneas, complex apneas, periodic breathing or central apnea.
- BiPAP autoSV Advanced provides three types of support:
 - Auto-titrating CPAP or bi-level PAP to prevent airway collapse during OSA events
 - Automatically calculated back-up rate for central apneas
 - Pressure support ventilation during periods of hypoventilation
- Settings for BiPAP autoSV Advanced:
 - Rate
 - Rise time
 - Inspiratory time
 - EPAP_{min} = minimum expiratory pressure
 - EPAP_{max} = maximum expiratory pressure
 - PS_{min} = minimum pressure support
 - PS_{max} = maximum pressure support
 - Max pressure = maximum pressure level

PHILIPS

RESPIRONICS

sense and simplicity

Suggested titration protocol for BiPAP autoSV Advanced

GOAL: Adjust user-set parameters for optimal efficacy and adherence

Acclimation zone

Set mode to BiPAP autoSV Advanced

- Establish initial settings as indicated below or as ordered by physician
- Ensure proper mask fit to allow algorithm to work effectively
- Have patient breathe on autoSV Advanced at basic settings below
- Adjust EPAP_{min}, Bi-Flex and PS_{min} settings to patient comfort

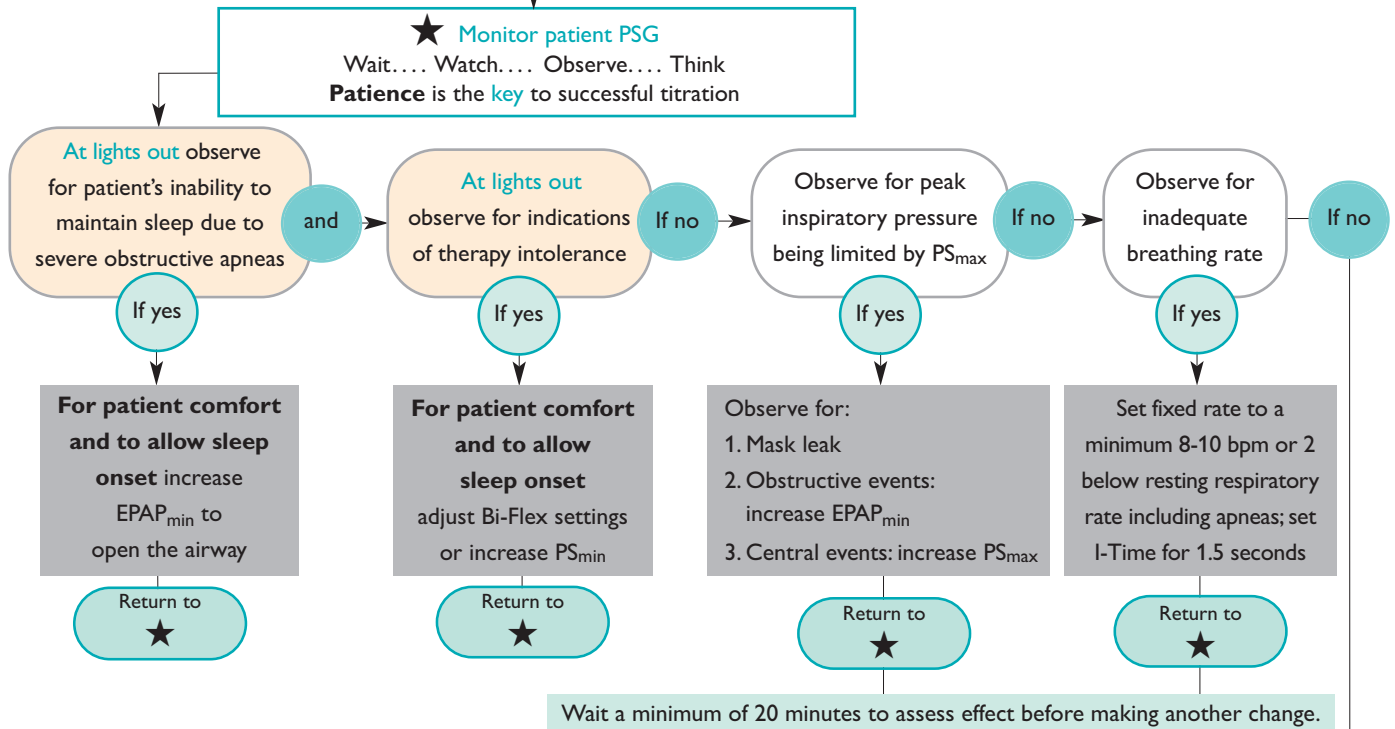
EPAP _{min}	4 cm H ₂ O*	Max pressure	25 cm H ₂ O
EPAP _{max}	15 cm H ₂ O	Rate	auto
PS _{min}	0 cm H ₂ O	Bi-Flex	To patient comfort
PS _{max}	20 cm H ₂ O		

*If patient has known CPAP pressure of < 10 set EPAP_{min} at 4 cm H₂O or patient comfort

*If patient has known CPAP pressure of > 10 set EPAP_{min} at 6-8 cm H₂O or patient comfort

IMPORTANT: Guidelines are intended to serve only as a reference. They shall be used only in conjunction with the instructions and/or protocol set forth by the physician and institution in which the assist device is being used. The guidelines are not intended to supersede established medical protocols.

Titration zone



Prescription zone

BiPAP autoSV Advanced prescription

EPAP _{min}	=	_____ cm H ₂ O	Rate	=	Auto or _____ BPM
EPAP _{max}	=	_____ cm H ₂ O	I-Time	=	_____ sec (with fixed rate only)
PS _{min}	=	_____ cm H ₂ O	Rise time and Bi-Flex	=	To patient comfort
PS _{max}	=	_____ cm H ₂ O			
Max pressure	=	_____ cm H ₂ O	Interface:	_____	

Please visit www.philips.com/respironics



© 2010 Koninklijke Philips Electronics N.V. All rights are reserved.

Philips Healthcare reserves the right to make changes in specifications and/or to discontinue any product at any time without notice or obligation and will not be liable for any consequences resulting from the use of this publication.

CAUTION: US federal law restricts these devices to sale by or on the order of a physician.

Hoech KB 12/23/10 MCI 4103929 PN 1082045

Philips Healthcare is part of Royal Philips Electronics

Philips Respironics Asia Pacific
+65 6882 5282
Philips Respironics Australia
+61 (2) 9666 4444
Philips Respironics International Headquarters
+33 1 47 28 30 82
Philips Respironics United Kingdom
+44 800 1300 845

Philips Respironics
1010 Murry Ridge Lane
Murrysville, PA 15668

Customer Service
+1 724 387 4000
800 345 6443 (toll free, US only)
www.philips.com/respironics