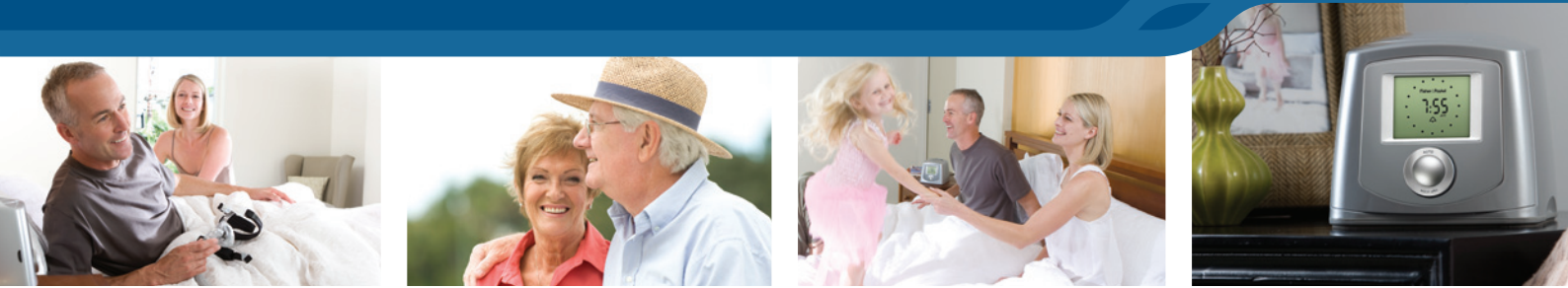


Stylish on the Outside. Smart on the Inside.



THE F&P ICON™ AUTO DELIVERS:

- ThermoSmart™ Technology for more humidity and comfort
- Auto-adjusting pressure for personalized treatment during sleep
- SensAwake™ Technology is responsive to waking moments
- InfoSmart™ Technologies for flexible data communication options

PLUS

- Contemporary and stylish design for bedroom appeal
- Forward facing clock with customizable AlarmTunes™
- Compact footprint including humidifier and power supply
- Combined smart technologies.



Stylish on the Outside. Smart on the Inside.

The F&P ICON™ has been designed from the outside-in to answer the strong call for a contemporary, compact CPAP that blends seamlessly into any bedroom environment, helping to break down some of the traditional resistance associated with CPAP therapy.

Inside the F&P ICON™ is a comprehensive set of intelligent technologies, integrated into one stylish solution to deliver new levels of therapy, while effectively meeting your business needs. The smart technologies include:

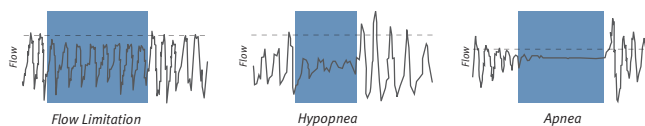
- ThermoSmart™ – **more** humidity¹ for more comfort^{2,3}
- Auto-adjusting – **more** flexibility for short or long-term treatment needs
- SensAwake™ – **more** patient comfort during waking moments
- Integrated technologies – **more** opportunity for success and patient compliance.

The F&P ICON™ Auto

The flow-based auto-adjusting algorithm provides pressure when it is needed to meet the changing demands of the upper airway during sleep, while SensAwake™ provides a sophisticated form of pressure relief when the patient experiences awake states.⁴ A prompt reduction in pressure upon wakefulness aims to improve comfort and facilitate the return to sleep.

Auto-adjusting Pressure

The versatile Auto device can be used as a titration and long-term treatment solution for your patients. The flow-based auto-adjusting algorithm detects and effectively responds to flow limitation, hypopnea and apnea.



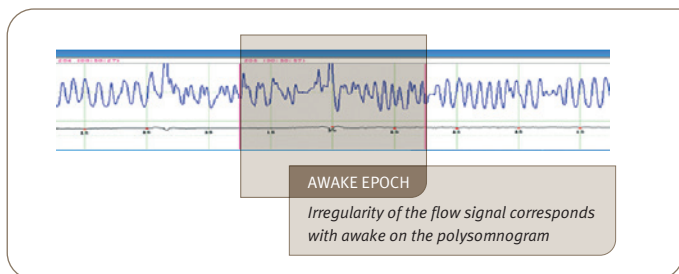
SensAwake™

Responsive to waking moments.



Patients commonly arouse from sleep which can sometimes lead to a full awakening. During these awake states, many patients are intolerant of the delivered pressure,⁵ which may force them to prematurely abandon CPAP therapy for the night. It is therefore important to provide as much comfort as possible during these awake states to help facilitate the return to sleep.

SensAwake™ does this by searching for a pattern of irregular breathing which occurs at the transition from sleep to awake, as shown in the flow signal below.⁴ SensAwake™ senses this irregularity in flow and promptly reduces the pressure to aid the transition back to sleep.⁴

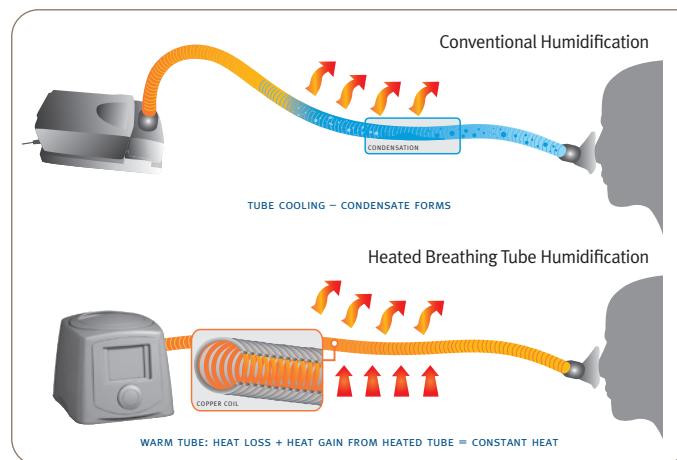


ThermoSmart™

More humidity. More comfort.



ThermoSmart™ Technology includes an advanced humidification algorithm and a heated breathing tube, which both work to provide optimal humidity and reduce condensation. Patients will benefit from higher levels of humidity¹ for improved comfort²⁻³ and a clinically proven better night's sleep.³



FOCUS ON FEATURES



Elbow

Used to connect a ThermoSmart™ or standard Breathing Tube to the device. The Elbow also rotates for a preferred position.

Water Chamber

One-piece chamber. Holds 420 ml of water and is dishwasher.



Chamber Lid

Must be correctly fitted for optimal pressure delivery and can also be used as a handle to carry the device.

Menu System

The Home Screen with a clock is the default display. Each point of the clock-face represents the available settings.



SmartStick™ / USB Port

The USB Port houses the SmartStick™ to record patient compliance, efficacy and flow data.

SmartDial™

Intuitive controls allow one-touch navigation of the Menu System, using a Press, Turn, Press principle.



Air Filter

Ensures the air is filtered from particles and dust.



AUTO CPAP | FEATURES

THE F&P ICON™ AUTO

INCLUDED WITH THE F&P ICON™	REPLACEMENT PARTS	PRODUCT SPECIFICATIONS																																															
<ul style="list-style-type: none"> • Auto CPAP • 1 x Carry-case* • 1 x Water Chamber • 1 x Chamber Lid • 1 x Breathing Tube** • 1 x SmartStick™ • 1 x SmartStick™ Mailer • 1 x Use and Care Manual • 1 x spare Air Filter 	<table border="0"> <tr> <td>Water Chamber</td> <td>900ICON200</td> </tr> <tr> <td>SmartStick™</td> <td>900ICON202</td> </tr> <tr> <td>SmartStick™ Net</td> <td>900ICON203</td> </tr> <tr> <td>Elbow</td> <td>900ICON204</td> </tr> <tr> <td>Outlet Seal</td> <td>900ICON206</td> </tr> <tr> <td>ThermoSmart™ Breathing Tube</td> <td>900ICON208</td> </tr> <tr> <td>Breathing Tube</td> <td>900HC221</td> </tr> <tr> <td>Air Filter</td> <td>900ICON503</td> </tr> <tr> <td>Filter Grill</td> <td>900ICON218</td> </tr> <tr> <td>Silver Gloss Lid</td> <td>900ICON214</td> </tr> <tr> <td>Matt Gray Lid</td> <td>900ICON216</td> </tr> <tr> <td>Protective Carry-case</td> <td>900ICON308</td> </tr> <tr> <td>Soft Carry-case</td> <td>900ICON315</td> </tr> <tr> <td>Use and Care Manual</td> <td></td> </tr> <tr> <td> 3-Language</td> <td>185046221</td> </tr> <tr> <td> 17-Language</td> <td>185045354</td> </tr> <tr> <td>Healthcare Provider CD</td> <td>900ICON110</td> </tr> <tr> <td>F&P InfoSmart™ CD</td> <td>900ICON100</td> </tr> <tr> <td>SmartStick™ Studio CD</td> <td>900ICON112</td> </tr> </table>	Water Chamber	900ICON200	SmartStick™	900ICON202	SmartStick™ Net	900ICON203	Elbow	900ICON204	Outlet Seal	900ICON206	ThermoSmart™ Breathing Tube	900ICON208	Breathing Tube	900HC221	Air Filter	900ICON503	Filter Grill	900ICON218	Silver Gloss Lid	900ICON214	Matt Gray Lid	900ICON216	Protective Carry-case	900ICON308	Soft Carry-case	900ICON315	Use and Care Manual		3-Language	185046221	17-Language	185045354	Healthcare Provider CD	900ICON110	F&P InfoSmart™ CD	900ICON100	SmartStick™ Studio CD	900ICON112	<p>Dimensions 6.3 x 6.7 x 8.7 in (160 x 170 x 220 mm)</p> <p>Weight 4.8 lb (2.2 kg) Packed Weight: 8.7 lb (4.0 kg)</p> <p>Performance Pressure Range: 4 to 20 cmH₂O</p> <p>Noise Level < 30 dBA</p> <p>Standards Compliance IEC60601-1: 1998, AS/NZS 3200.1.0: 1998, EN60601-1: 1990 + A1 - A2</p> <p>SmartStick™ Data Recording The SmartStick™ records up to 365 days of summary compliance and efficacy data, 30 days of detailed efficacy data (AHI, Pressure, Leak), as well as cumulative data from first use.</p> <p>Electrical Ratings</p> <table border="1"> <thead> <tr> <th>RATED SUPPLY VOLTAGE</th> <th>RATED CURRENT INPUT</th> <th>RATED SUPPLY FREQUENCY</th> </tr> </thead> <tbody> <tr> <td>100-115 V</td> <td>1.27 A (1.43 A Max)</td> <td>50-60 Hz/400 Hz</td> </tr> <tr> <td>220-240 V</td> <td>1.07 A (1.21 A Max)</td> <td>50-60 Hz</td> </tr> </tbody> </table>	RATED SUPPLY VOLTAGE	RATED CURRENT INPUT	RATED SUPPLY FREQUENCY	100-115 V	1.27 A (1.43 A Max)	50-60 Hz/400 Hz	220-240 V	1.07 A (1.21 A Max)	50-60 Hz
Water Chamber	900ICON200																																																
SmartStick™	900ICON202																																																
SmartStick™ Net	900ICON203																																																
Elbow	900ICON204																																																
Outlet Seal	900ICON206																																																
ThermoSmart™ Breathing Tube	900ICON208																																																
Breathing Tube	900HC221																																																
Air Filter	900ICON503																																																
Filter Grill	900ICON218																																																
Silver Gloss Lid	900ICON214																																																
Matt Gray Lid	900ICON216																																																
Protective Carry-case	900ICON308																																																
Soft Carry-case	900ICON315																																																
Use and Care Manual																																																	
3-Language	185046221																																																
17-Language	185045354																																																
Healthcare Provider CD	900ICON110																																																
F&P InfoSmart™ CD	900ICON100																																																
SmartStick™ Studio CD	900ICON112																																																
RATED SUPPLY VOLTAGE	RATED CURRENT INPUT	RATED SUPPLY FREQUENCY																																															
100-115 V	1.27 A (1.43 A Max)	50-60 Hz/400 Hz																																															
220-240 V	1.07 A (1.21 A Max)	50-60 Hz																																															

F&P ICON™ Models and Features Matrix

PERFORMANCE FEATURES	Auto		Premo	Novo
	ICONAAX	ICONABX	ICONPBX	ICONNAX
Fully integrated	•	•	•	•
ThermoSmart™ Technology**	•	•	•	•
Auto-Adjusting Pressure	•	•		
Efficacy Reporting	•	•	•	
Compliance Reporting	•	•	•	•
SmartStick™	•	•	•	•
SensAwake™	•			
Proportional Ramp	•	•	•	•
Auto-Altitude Adjusting	Automatic	Automatic	Automatic	Manual
Leak Compensation	•	•	•	
Clock and AlarmTunes™	•	•	•	•
InfoSmart™ Technologies	Advanced	Advanced	Advanced	Basic

NOTE: The X denotes country variant

* Part may vary depending on country

** In some countries the ThermoSmart™ Breathing Tube needs to be purchased as an accessory to activate ThermoSmart™ Technology

www.fphcare.com

© 2010 Fisher & Paykel Healthcare Limited

Manufacturer Fisher & Paykel Healthcare Ltd, 15 Maurice Paykel Place, East Tamaki, Auckland 2013, PO Box 14 348, Panmure, Auckland 1741, New Zealand Tel: +64 9 574 0100 Fax: +64 9 574 0158 Email: info@fphcare.co.nz Web: www.fphcare.com **Australia** Tel: +61 3 9879 5022 Fax: +61 3 9879 5232 **Austria** Tel: 0800 29 31 23 Fax: 0800 29 31 22 **Benelux** Tel: +31 40 216 3555 Fax: +31 40 216 3554 **China** Tel: +86 20 3205 3486 Fax: +86 20 3205 2132 **France** Tel: +33 1 6446 5201 Fax: +33 1 6446 5221 **Germany** Tel: +49 7181 98599 0 Fax: +49 7181 98599 66 **India** Tel: +91 80 4284 4000 Fax: +91 80 4123 6044 **Irish Republic** Tel: 1800 409 011 **Italy** Tel: +39 06 7839 2939 Fax: +39 06 7814 7709 **Japan** Tel: +81 3 3661 7205 Fax: +81 3 3661 7206 **Northern Ireland** Tel: +0800 132 189 **Spain** Tel: +34 902 013 346 Fax: +34 902 013 379 **Sweden** Tel: +46 8 564 76 680 Fax: +46 8 36 63 10 **Switzerland** Tel: 0800 83 47 63 Fax: 0800 83 47 54 **Taiwan** Tel: +886 2 8751 1739 Fax: +886 2 8751 5625 **Turkey** Tel: +90 312 354 34 12 Fax: +90 312 354 31 01 **UK (EU Authorised Representative)** Fisher & Paykel Healthcare Ltd, Unit 16, Cordwallis Park, Clivemont Road, Maidenhead, Berkshire SL6 7BU, UK Tel: +44 1628 626 136 Fax: +44 1628 626 146 **USA** Tel: +1 800 446 3908 or +1 949 453 4000 Fax: +1 949 453 4001